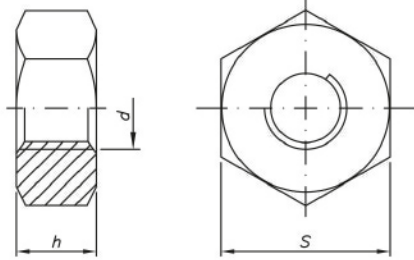



**PORCA SEXTAVADA PESADA - ASTM A194 - 2H**

**MATERIAL:**  
**AÇO MÉDIO CARBONO - TEMPERADO E REVENIDO**  
**ACABAMENTO:**  
**ENEGRECIDO DE TÊMPERA • ZINCADO BRANCO**  
**BICROMATIZADO • GAL. A FOGO (OVER SIZE) • NIQUELADO**

**DIMENSÕES:**  
**ASME B18.2.2**  
**ROSCA:**  
**UNC / UN - ASME B1.1**


**TABELA DE DIMENSÕES (MM) • QUANTIDADES POR EMBALAGEM**

d (diâmetro)	rosca/FPP	h (Altura) máx.	S (Chave) máx.		QTDD
			pol.	mm	
1/4	UNC-20	6,35	1/2	12,70	1.000
5/16	UNC-18	7,97	9/16	14,27	500
3/8	UNC-16	9,57	11/16	17,47	500
7/16	UNC-14	11,20	3/4	19,05	500
1/2	UNC-13	12,80	7/8	22,22	200
9/16	UNC-12	14,42	15/16	23,81	200
5/8	UNC-11	16,02	1-1/16	26,97	100
3/4	UNC-10	19,25	1-1/4	31,75	100
7/8	UNC-9	22,47	1-7/16	36,52	50
1	UNC-8	25,70	1-5/8	41,27	50
1-1/8	UNC-7	28,93	1-13/16	46,02	20
1-1/4	UNC-7	31,77	2	50,80	20
1-3/8	UNC-6	35,00	2-3/16	55,56	20
1-1/2	UNC-6	38,22	2-3/8	60,32	20
1-3/4	UNC-5	44,67	2-3/4	69,85	10
2	UNC-4-1/2	51,13	3-1/8	79,37	10
2-1/4	UNC-4-1/2	57,15	3-1/2	88,90	10
2-1/2	UNC-4	63,62	3-7/8	98,42	10
2-3/4	UNC-4	70,07	4-1/4	107,95	5
3	UNC-4	76,53	4-5/8	117,47	5
1-1/8	UN-8	28,91	1-13/16	46,02	20
1-1/4	UN-8	31,77	2	50,80	20
1-3/8	UN-8	35,00	2-3/16	55,56	20
1-1/2	UN-8	38,22	2-3/8	60,32	20
1-5/8	UN-8	41,45	2-9/16	65,07	10
1-3/4	UN-8	44,67	2-3/4	69,85	10
1-7/8	UN-8	47,90	2-15/16	74,62	10
2	UN-8	51,13	3-1/8	79,37	10
2-1/4	UN-8	57,15	3-1/2	88,90	10
2-1/2	UN-8	63,62	3-7/8	98,42	5
2-3/4	UN-8	70,07	4-1/4	107,95	5
3	UN-8	76,53	4-5/8	117,47	5
3-1/2	UN-8	89,05	5-3/8	136,52	2